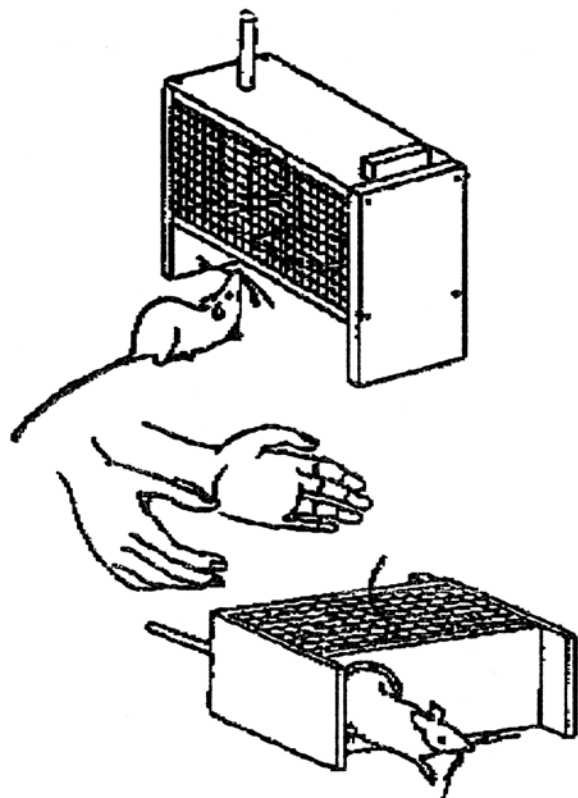
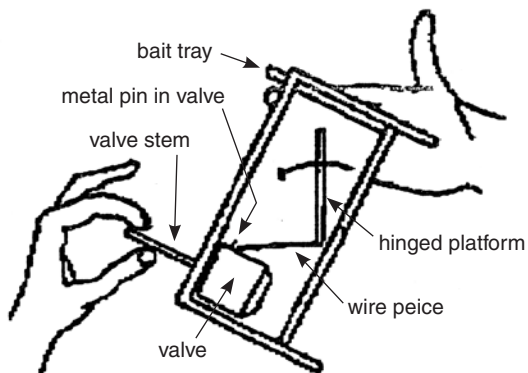


INSTRUCTIONS: LITTLE VALVE[®] MOUSE TRAP



1. Slide out the bait tray and spread a creamy cheese or peanut butter into the carved out area. Reinsert the baited tray into the trap.

2. Pull the valve stem up and tilt the trap 60° so that the hinged platform inside the trap flips back and its wire piece rests against the valve just below the metal pin. Set the trap down in a upright position. The trap in now set.

3. Set trap in a place that mice are visiting.

4. To release a captured mouse: Give the sprung trap a gentle shake to waken mouse. Pull the valve stem up to open entry/exit hole and lay trap on its side. Mouse will run out.



DWL Brand, Mfg.
P.O. Box 174
Galway, NY 12074-0174
Phone: 518.882.9145
Fax: 518.882.5212
www.DWLBrand.com

REMEMBER

Do Not Play with Animals and
Wear Gloves when Handling Trap!